

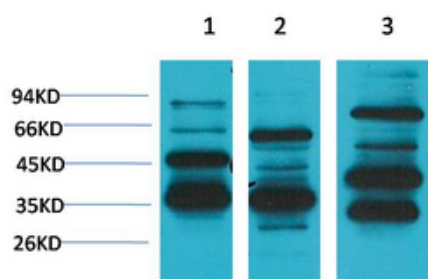


Mas1 Polyclonal Antibody

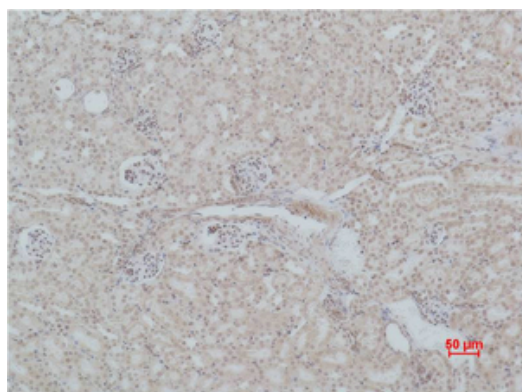
Catalog No	YP-Ab-12963
Isotype	IgG
Reactivity	Human;Mouse;Rat
Applications	WB;IHC;IF
Gene Name	MAS1
Protein Name	Proto-oncogene Mas
Immunogen	Synthetic Peptide of Mas1
Specificity	The antibody detects endogenous Mas1 protein.
Formulation	PBS, pH 7.4, containing 0.5%BSA, 0.02% sodium azide as Preservative and 50% Glycerol.
Source	Polyclonal, Rabbit,IgG
Purification	The antibody was affinity-purified from rabbit antiserum by affinity-chromatography using epitope-specific immunogen.
Dilution	WB: 1:2000-5000 IHC: 1:200-500. IF 1:50-200
Concentration	1 mg/ml
Purity	≥90%
Storage Stability	-20°C/1 year
Synonyms	MAS1; MAS; Proto-oncogene Mas
Observed Band	36-50kD
Cell Pathway	Cell membrane ; Multi-pass membrane protein .
Tissue Specificity	
Function	caution:Was originally (PubMed:3419518) thought to be a receptor for angiotensin II.,disease:The MAS oncogene has a weak focus-inducing activity in transfected NIH 3T3 cells.,similarity:Belongs to the G-protein coupled receptor 1 family.,
Background	This gene encodes a class I seven-transmembrane G-protein-coupled receptor. The encoded protein is a receptor for angiotensin-(1-7) and preferentially couples to the Gq protein, activating the phospholipase C signaling pathway. The encoded protein may play a role in multiple processes including hypotension, smooth muscle relaxation and cardioprotection by mediating the effects of angiotensin-(1-7). [provided by RefSeq, May 2012],
matters needing attention	Avoid repeated freezing and thawing!

Usage suggestions

This product can be used in immunological reaction related experiments. For more information, please consult technical personnel.

Products Images

Western blot analysis of 1) Human Brain Tissue, 2) Mouse Brain Tissue, 3) Rat Brain Tissue using Mas1 Polyclonal Antibody. Secondary antibody(catalog#:RS0002) was diluted at 1:20000



Immunohistochemical analysis of paraffin-embedded Mouse Kidney Tissue using Mas1 Polyclonal Antibody.